

TIME & ECOLOGY
AMANO



Compact Dust Collector with Pulse Jet

***IPR/IXR* SERIES**

Built-in Invertor & Compressor

Pulse Jet Dust Collector

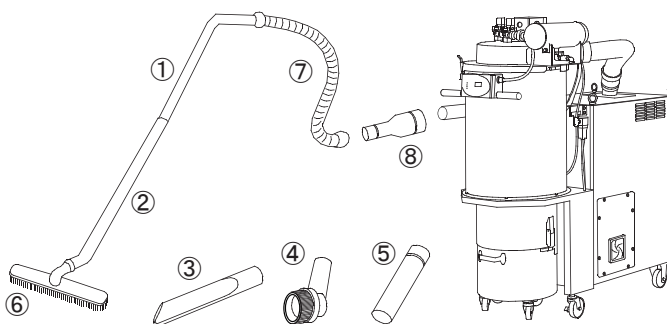


Specifications

Model		IPR-3	IXR-3	IPR-4	IXR-4	IPR-5	IXR-5
Power supply		3-phase 200V 50/60Hz common use					
Control		Inverter (6-stage speed select operation)					
Motor Output (kW)		1.5		3.7		5.5	
Capacity	(m ³ /min)	3.0		5.0		6.0	
	(cf/min)	106		176		212	
Static pressure (kPa)		13.0		23.5		27.0	
Filter Area	(m ²)	3.5	3.2	4.7	4.8	4.7	4.8
	(sf)	37.7	34.4	50.5	51.6	50.5	51.6
Dust off		Automatic Pulse Jet					
Pilot Valve (Quantity)		3					
Bucket Capacity (L)		30					
Caster Wheels		φ 100mm × 4pcs (Rolling caster × 2pcs Fixed caster × 2pcs)					
Power Cord	(m/ft)	VCT 4-core 3.5 / 11.5 (without plug)					
	(mm ²)	2.0		3.5		5.5	
Inlet duct	(in)	φ 2"		φ 2.5"			
	(mm)	φ 50.8		φ 63.5			
Size	(in)	49.4 × 24.5 × 49.5		49.4 × 24.5 × 57.4			
	(mm)	1256 × 622 × 1258		1256 × 622 × 1458			
Weight	(lbs)	430	440	528	550	583	605
	(kg)	195	200	240	250	265	275
Built-in compressor	Power control	3-phase 200V 0.2kW 50/60Hz					
	Pressure switch	Automatic control					
	Backstop Control	Auto Reverse Phase Detection					
	Oil Feeding	No Feeding Type					
Objectives		IPR: Powder IXR: Micro powder (except for combustible powder with possibility of dust explosion)					
Max.Allowable suction air temperature(°C)/(°F)		40/104					
Ambient temperature(°C)/(°F)		0~40/32~104					
Noise (dB[A])		72±2 or less (without a compressor operation) 75±2 or less (with a compressor operation) The pulse jet sound is not included					
Coating color		JPMA Y25-90A (Roof & Bucket: YN40)					

Option

name	part number
①・②Pipe rods for floor (φ 38 mm)	VF-1610
③Crevice (φ 38 mm)	VF-1152
④・⑤Round Blush (φ 73 mm)	VF-1696
⑥Floor blush	VF-111350
⑦Vacuum Hose (φ 38 mm × 2.5 mm)	VF-4001
Vacuum Hose (φ 38 mm × 5.0 mm)	VF-4002
Vacuum Hose (φ 38 mm × 10 mm)	VF-4004
⑧ IPR-3/IXR-3inlet joint set	HVX-93015
IPR-4・5/IXR-4・5inlet joint set	HVY-93015
※HVX-93015 (nominal diameter: φ 38mm~φ 50mm)	
※HVY-93015 (nominal diameter: φ 38mm~φ 65mm)	



For Your Safety

- Be sure to read the instruction manual thoroughly before getting started, and use the machine correctly.
- This product is designed to collect powder particles that do not pose the risk of dust explosion or fire.
- Do not use the machine for any purpose other than dust collection.
- Do not suction the following materials:
 - Flammable materials... gasoline, thinner, benzene, kerosene, paint, etc.
 - Explosive materials... aluminum, magnesium, titanium, zinc, epoxies, etc.
 - Sparks... sparks, or dust that contains sparks
 - Fire remains... cigarette stubs, ashes, etc.
 - Other... water, oil, liquid chemicals, etc.
- If there is a danger of suctioning sparks when collecting flammable dust from polishing work and so forth, consult with your branch or sales office to select the appropriate model.
- This product is not an explosion-proof type. Do not install the machine at hazardous areas specified by laws.
- Do not operate the machine in areas exposed to mist, fumes or gases that are inflammable, explosive or corrosive.
- Please comply with regulations stipulated by laws and/or ordinances that are applicable to product installation.
- The ambient temperature range is from 0°C to 40°C.
- Be sure to ground the machine to protect against electric shock.
- Be sure to use pipes with the appropriate diameter and make them as short as possible according to dust collection conditions so that dust will not accumulate in them.
- Dispose of collected dust daily. Do not allow dust to accumulate in the bucket.
- Please perform daily and periodical maintenance work in accordance with instructions described in the operation manual.
- Please comply with regulations stipulated by laws and/or ordinances that are applicable to product maintenance.

Specifications and descriptions contained in this catalog may be subject to change without notice.

Please direct any questions to:

Digital data only

AMANO Corporation

275 MAMEDO-CHO, KOHOKU-KU, YOKOHAMA,
JAPAN 222-8558
TEL.+81-45-439-1508 FAX.+81-45-439-1150
Website: <http://www.amano.co.jp/English/>